

OFFICIAL # 1203469

ABS ID NA

**MAIN PARTICULARS**

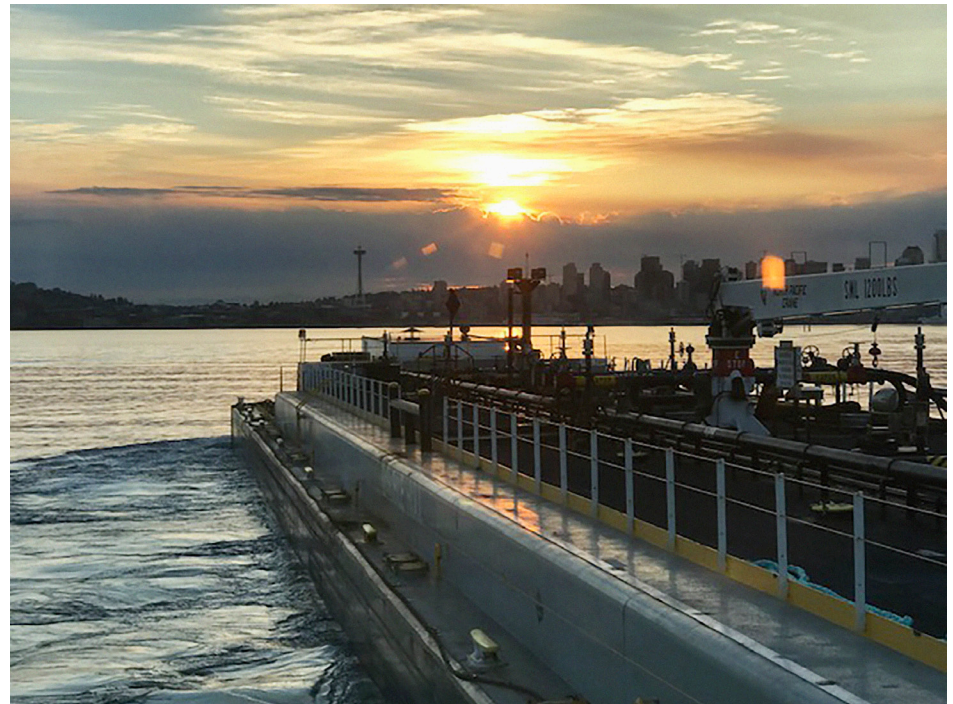
BUILT	10/17/2007
BUILDER	Trinity Marine Group, Ashland City, TN
CLASS, ROUTES	NA, Lakes, Bays, and Sounds

**DIMENSIONS**

LENGTH	356 ft
LENGTH OVERALL	356 ft
BEAM	54 ft
DEPTH	13 ft
GROSS TONNAGE	2099 GRT
NET TONNAGE	2099 NRT
LOADLINE DRAFT	
AIR DRAFT	30.10 ft
DEADWEIGHT	

**CARGO HANDLING**

# OF ISOLATED CARGO SYSTEMS, PRODUCT GRADE	2, Grade "A" and lower
CARGO HEADER	2 Port/2 Stbd
VAPOR HEADER	1 Port/1 Stbd
BCM	
SCM	
PUMPING	7,000 BBLS/HR
GAUGING	Closed Hermetic
ALARMS	ERL High Level/Overflow Audio/Visual and Tank High Level Indicator sticks


**MACHINERY**

PUMPS	(2) Flowserve LS13
PUMP ENGINE	(2) John Deere 6125 450HP
AUXILIARIES	(1) John Deere 6068TF275, 99kW
CARGO HEATER	Volcanic 6.5MMBtu
ATB CONNECTION SYSTEM	NA
INERT GAS SYSTEM	NA
STRIPPING SYSTEM	No

**CARGO TANK CONFIG. @ 95%**

TANK #	PORT	CENTER	STARBOARD
1	3355.12		3353.24
2	3107.07		3108.03
3	3889.97		3887.46
4	3887.46		3889.42
5	3401.57		3404.40
6			
7			

**DECK HARDWARE**

HOSE HANDLING CRANE	(1) North Pacific Crane MCT-1065
DECK WINCHES	(2) Nabrico 40T Manual Winches
MOORING WINCHES	NA
ANCHOR WINCH	

**CAPACITIES**

CARGO CAPACITY BBLS @ 95%	35283.74
UNREFINED CAPACITY BBLS @ 95%	NA
REFINED CAPACITY BBLS @ 95%	Seg 1: 15,678 , Seg 2: 27,506
AUX DIESEL TANK	13,000 gallons

**ABOUT**

REVISION: 05/28/2020

**CENTERLINELOGISTICS.COM**
