



OFFICIAL # 1257375

ABS ID 16252210

**MAIN PARTICULARS**

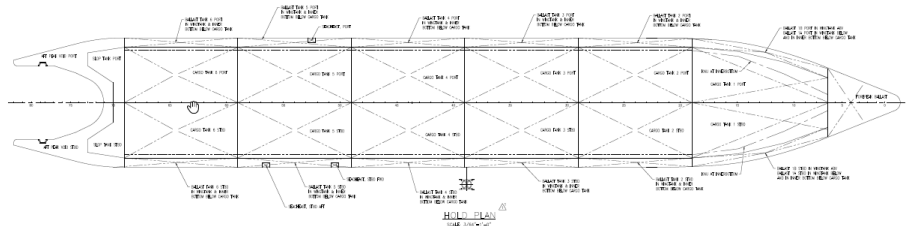
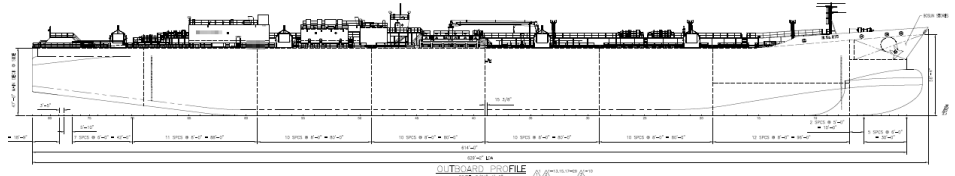
BUILT	2016
BUILDER	VT Halter, Pascagoula, MS
CLASS, ROUTES	+A1, Oil Tank Barge, E, ABS, SH, SHCM, Oceans

**DIMENSIONS**

LENGTH	589.4 ft
LENGTH OVERALL	628.5 ft
BEAM	91 ft
DEPTH	47 ft at side, 49 ft at CL
GROSS TONNAGE	19781 GT ITC, 16149 GRT
NET TONNAGE	13200 NT ITC, 16149 NRT
LOADLINE DRAFT	37.5 ft
AIR DRAFT	70.4 ft
DEADWEIGHT	41,222 LT

**CARGO HANDLING**

# OF ISOLATED CARGOSYSTEMS, PRODUCT GRADE	4, Grade "B" and lower
CARGO HEADER	
VAPOR HEADER	
BCM	332 ft
SCM	297 ft
PUMPING	
GAUGING	Closed Hermetic
ALARMS	



**MACHINERY**

PUMPS	(4) Flowserve 13XT/20EKH Deepwell Multistage Centrifugal
PUMP ENGINE	(4) John Deere 6135HF485, 600HP @ 1800 RPM, Tier 3
AUXILIARIES	(3) Marathon 433PSL6220, 330kW, (1) Marathon 363PSL3127 90kW
CARGO HEATER	Vapor Power 14 MBTu
ATB CONNECTION SYSTEM	Intercon
INERT GAS SYSTEM	Maritime Protection: Flue Gas
STRIPPING SYSTEM	(2) 3,524 bbls tanks

**DECK HARDWARE**

HOSE HANDLING CRANE	(2) Hydro Pro HP60/40F
DECK WINCHES	NA
MOORING WINCHES	(4) Intercontinental Double Drum DD-137
ANCHOR WINCH	(2) Intercontinental HSW-262D

**CAPACITIES**

CARGO CAPACITY @ 95%	256,268 bbls
BALLAST	4,343,491 gallons
WATER	Fresh: 25,211 gallons Potable: 934 gallons Grey: 1668 gallons
AUX DIESEL TANK	39,218 gallons

**CARGO TANK CONFIG. @ 95%**

TANK #	PORT	CENTER	STARBOARD
1	20936.20		20936.20
2	21624.00		21624.00
3	21672.80		21672.80
4	21672.80		21672.80
5	21672.80		21672.80
6	20605.60		20605.60
7			

**ABOUT**

REVISION: 9/15/2021

**CENTERLINELOGISTICS.COM**

