

OFFICIAL # 1190797

ABS ID NA

MAIN PARTICULARS

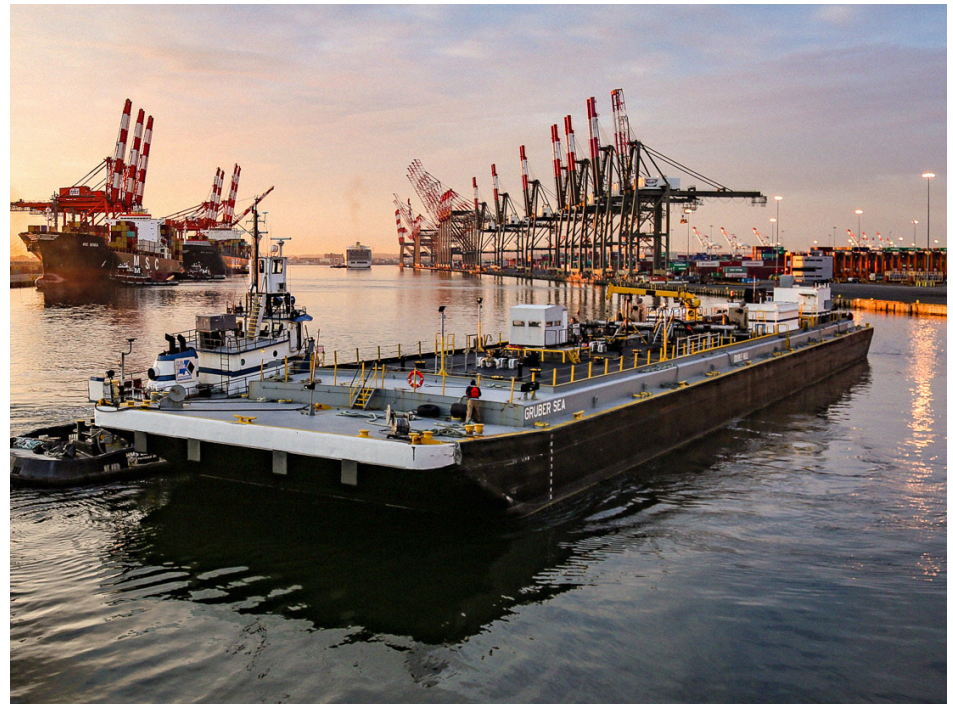
BUILT	1/31/2007
BUILDER	Trinity Marine Group, Madisonville, LA
CLASS, ROUTES	NA, Lakes, Bays, and Sounds

DIMENSIONS

LENGTH	308 ft
LENGTH OVERALL	308 ft
BEAM	54 ft
DEPTH	12 ft
GROSS TONNAGE	1676 GRT
NET TONNAGE	1676 NRT
LOADLINE DRAFT	
AIR DRAFT	29.8 ft
DEADWEIGHT	

CARGO HANDLING

# OF ISOLATED CARGO SYSTEMS, PRODUCT GRADE	2, Grade "D" and lower
CARGO HEADER	2 Port/2 Stbd; 10 in & 4 in
VAPOR HEADER	NA
BCM	140 ft
SCM	168 ft
PUMPING	
GAUGING	Open
ALARMS	Visual Stick Gauges


MACHINERY

PUMPS	(2) EPS 12FPO-716 FGM; (1) Bryon Jackson 11LS
PUMP ENGINE	(3) Cummins 6CTA 8.3-D, 270HP @ 1800 RPM, Tier 2
AUXILIARIES	(2) John Deere 6068TF275, 99 kW
CARGO HEATER	Volcanic 3.5 MBtu
ATB CONNECTION SYSTEM	NA
INERT GAS SYSTEM	NA
STRIPPING SYSTEM	No

CARGO TANK CONFIG. @ 95%

TANK #	PORT	CENTER	STARBOARD
1	2409.06		2404.87
2	2,042.92		2,039.36
3	1695.58		1695.58
4	2,122.61		2,126.29
5	2,387.66		2,383.50
6	2,412.05		2,412.05
7	2,412.05		2,412.05

DECK HARDWARE

HOSE HANDLING CRANE	(1) Tech Crane F10-60
DECK WINCHES	(4) Nabrico 40T Manual Winches
MOORING WINCHES	NA
ANCHOR WINCH	NA

CAPACITIES

CARGO CAPACITY BBLs @ 95%	26131.53
UNREFINED CAPACITY BBLs @ 95%	22,500.99 @ 94%
REFINED CAPACITY BBLs @ 95%	3,355.46 @ 94%
AUX DIESEL TANK	4,000 gallons

ABOUT

REVISION: 05/28/2020

CENTERLINELOGISTICS.COM
