

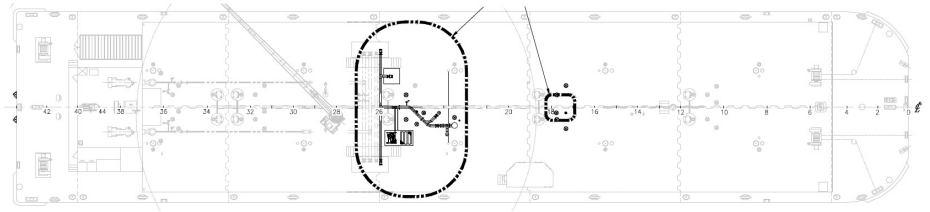


OFFICIAL # 1204649

ABS ID 08185131

**MAIN PARTICULARS**

BUILT	2008
BUILDER	Orange Shipbuilding, Orange, TX
CLASS, ROUTES	+ A1, Oil Tank Barge, ABS, Oceans



**DIMENSIONS**

LENGTH	277.3 ft
LENGTH OVERALL	290.08 ft
BEAM	62 ft
DEPTH	18.5 ft
GROSS TONNAGE	2655 GT ITC
NET TONNAGE	1548 GT ITC
LOADLINE DRAFT	14 ft
AIR DRAFT	22 ft
DEADWEIGHT	5945.38 LT

**CARGO HANDLING**

# OF ISOLATED CARGOSYSTEMS, PRODUCT GRADE	2, Grade "A" and lower
CARGO HEADER	2 Port/ 2 Stbd
VAPOR HEADER	1 Port/ 1 Stbd, On board Vapor Processing
BCM	175 ft
SCM	115 ft
PUMPING	8,000 BBLS/HR
GAUGING	EMS Radar Gauging, MMC
ALARMS	EMS High Level/Overflow Audio/Visual and Tank High Level Indicator sticks

**MACHINERY**

PUMPS	(2) IMO 4131C-800JD deep well screw pump, (1) Flowserve 10LS (12GL3)
PUMP ENGINE	(2) Detroit Diesel 60 12.7L
AUXILIARIES	(1) Marathon, 20kW (1) Detroit Diesel
CARGO HEATER	NA
ATB CONNECTION SYSTEM	NA
INERT GAS SYSTEM	NA
STRIPPING SYSTEM	NA

**CARGO TANK CONFIG. @ 95%**

TANK #	PORT	CENTER	STARBOARD
1	3298.00		3322.00
2	3280.00		3281.00
3	3278.00		3285.00
4	3281.00		3280.00
5	3234.00		3244.00
6			
7			

**DECK HARDWARE**

HOSE HANDLING CRANE	(1) Northern Pacific 1075 75ft
DECK WINCHES	NA
MOORING WINCHES	(4) Lantec D200-103 w/ 1-1/8" Plasma
ANCHOR WINCH	NA

**CAPACITIES**

CARGO CAPACITY BBLS @ 95%	32,783
UNREFINED CAPACITY BBLS @ 95%	19,659
REFINED CAPACITY BBLS @ 95%	13,124
AUX DIESEL TANK	2,800 gallons

**ABOUT**

REVISION: 2/26/2021

**CENTERLINELOGISTICS.COM**

