

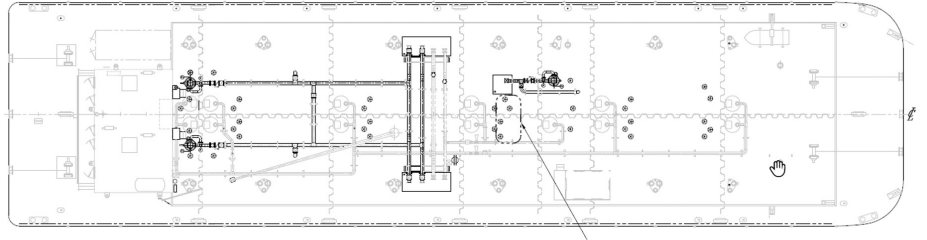


OFFICIAL # 1147851

ABS ID 03132960

**MAIN PARTICULARS**

|               |                                   |
|---------------|-----------------------------------|
| BUILT         | 2003                              |
| BUILDER       | Zidell Marine Corp, Portland, OR  |
| CLASS, ROUTES | + A1, Oil Tank Barge, ABS, Oceans |



**DIMENSIONS**

|                |             |
|----------------|-------------|
| LENGTH         | 227.2 ft    |
| LENGTH OVERALL | 240.1 ft    |
| BEAM           | 60 ft       |
| DEPTH          | 24 ft       |
| GROSS TONNAGE  | 2496 GT ITC |
| NET TONNAGE    | 1612 GT ITC |
| LOADLINE DRAFT | 18.71 ft    |
| AIR DRAFT      | 45 ft       |
| DEADWEIGHT     |             |

**CARGO HANDLING**

|  |   |
|--|---|
| # OF ISOLATED CARGO SYSTEMS, PRODUCT GRADE | 2, Grade "A" and lower  |
| CARGO HEADER                               | 3 Port/ 2 Stbd  |
| VAPOR HEADER                               | 2 Port/ 2 Stbd  |
| BCM  | 175 ft  |
| SCM  | 115 ft  |
| PUMPING                                    | 8,000 BBLS/HR   |
| GAUGING                                    | EMS Radar Gauging, MMC  |
| ALARMS                                     | EMS High Level/Overflow Audio/Visual and Tank High Level Indicator sticks |

**MACHINERY**

|                       |  |
|-----------------------|--|
| PUMPS                 | (2) IMO 4131C-800JD deep well screw pump, (1) Flowserve 10LS (12GL3) |
| PUMP ENGINE           | (2) Detroit Diesel 60 12.7L  |
| AUXILIARIES           | (1) Marathon, 20kW (1) Isuzu   |
| CARGO HEATER          | NA   |
| ATB CONNECTION SYSTEM | NA   |
| INERT GAS SYSTEM      | NA   |
| STRIPPING SYSTEM      | NA   |

**DECK HARDWARE**

|                     |                                      |
|---------------------|--------------------------------------|
| HOSE HANDLING CRANE | (1) Seattle/AK Marine MCF 955 58ft   |
| DECK WINCHES        | NA                                   |
| MOORING WINCHES     | (4) Lantec D200-103 w/ 1-1/8" Plasma |
| ANCHOR WINCH        | NA                                   |

**CAPACITIES**

|                               |               |
|-------------------------------|---------------|
| CARGO CAPACITY BBLS @ 95%     | 32,151        |
| UNREFINED CAPACITY BBLS @ 95% | 28,386        |
| REFINED CAPACITY BBLS @ 95%   | 6,256         |
| AUX DIESEL TANK               | 2,000 gallons |

**CARGO TANK CONFIG. @ 95%**

| TANK # | PORT    | CENTER  | STARBOARD |
|--------|---------|---------|-----------|
| 1      | 2364.00 |         | 2283.00   |
| 2      | 3165.00 |         | 3057.00   |
| 3      | 1930.00 | 2491.00 | 1835.00   |
| 4      | 3173.00 |         | 3063.00   |
| 5      | 3172.00 |         | 3056.00   |
| 6      | 2573.00 |         | 2480.00   |
| 7      |         |         |           |

**ABOUT**

REVISION: 2/26/2021

**CENTERLINELOGISTICS.COM**

